

Our trip to the Tower of London

Tuesday 23rd June 2026



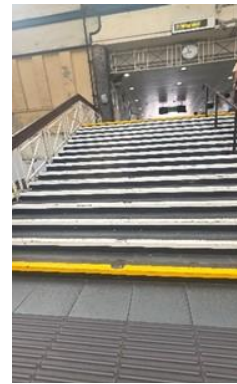
1. We will meet at Rickmansworth Station by 8.50am. We will stay with our adults and wait safely behind the yellow line (groups will be given to you at the station).



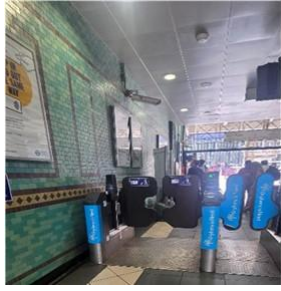
2. We will get on the Metropolitan line train to Aldgate. The train may be busy and loud. That is okay.



3. When we arrive at Aldgate Station, we will get off the train. We will stay with our group.



4. We will go up the stairs carefully. I can hold the handrail and take one step at a time. There may be lots of stairs. I can go slowly and follow my adult.



5. We will leave the station together.
I will walk calmly and listen to instructions.



6. We will cross the road at a safe place. We will stop, look and listen. I will stay very close to a grown-up.



7. Outside, there may be cars, buses, bikes and lots of people. I can use my walking feet.



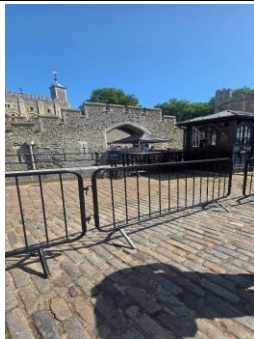
8. We will walk on the pavement towards the Tower of London. The walk may take about 15 minutes.



9. We may see Tower Bridge and the river. We will keep walking with our group.



10. At the Tower of London, it may be busy and exciting. I will stay close to my grown-up. We may need to wait a short while when Mrs. Shah collects the tickets.



11. When we arrive, we may need to wait in a line. Waiting is okay. I can ask for help if I need it.



12. Once we are in, we will use the toilets, and then it will be time for the workshop. We will stay with our adults at all times.